



## Two Specialty Championship Shows – Saturday, July 4, 2015

Aldergrove Lake Regional Park (Aldergrove Bowl Area)  
501 Lefevre Road, Abbotsford, BC

### OFFICIAL JUDGING SCHEDULE

#### **SHOW #1**      **LMWA Specialty – Judge: Mr. Steven Kass, Ferndale, Washington**

**9:30 a.m.**      50 Total (36 Regular Classes, 5 Altered, 9 Unofficial/Non-Regular)  
14 Males (2 Jr.Pup, 2 Sr. Pup, 1 Yearling, 3 Bred By, 6 Open)  
3 Jr Veteran Males, 1 Sr Veteran Male  
8 Females (3 Jr.Pup, 1 Sr.Pup, 1 Yearling, 1 Bred By, 2 Open)  
1 Sr. Veteran Female  
4 Male Specials, 5 Female Specials  
2 Baby Puppies (1 Male, 1 Female)  
5 Altered Females  
1 Brace, 5 Racing Class, 1 Coursing Class

#### **SHOW #2**      **WCoBC Specialty: Mr. Charles Roberts, Oregon City, Oregon**

**1:00 p.m.**      69 Total (42 Regular Classes, 6 Altered, 21 Unofficial/Non-Regular)  
19 Males (3 Jr Pup, 3 Sr.Pup, 1 Yearling, 1 Can.Bred, 3 Bred By, 8 Open)  
2 Jr Veteran Males, 2 Sr. Veteran Male  
10 Females (3 Jr. Pup, 2 Sr Pup, 1 Can.Bred, 2 Bred By, 2 Open)  
1 Sr. Veteran Female  
4 Male Specials, 4 Female Specials  
2 Baby Puppies (1 Male, 1 Female)  
1 Altered Male, 5 Altered Females  
1 Brace, 2 Dams, 2 Stud Dogs, 8 Racing Class, 6 Coursing Class

Please bring your own shade/shelter and water. All judging will be OUTDOORS with no cover in case of inclement weather.

Lunch will be available for \$5 per person, which will include a 6" Subway sandwich, bag of chips and a drink. Please bring exact change if possible.

Don't forget LMWA's popular basket raffle! Donations for the regular raffle gratefully accepted.

*Emily Szabo, Show Secretary, [LMWA@shaw.ca](mailto:LMWA@shaw.ca) Schedule is based on 25 dogs per hour.*

**PLEASE NOTE: Saturday and Sunday's shows are at DIFFERENT locations!!**



## Regional Specialty Championship Show

**Sunday, July 5, 2015**

Upper Sumas Elementary School  
36321 Vye Road, Abbotsford, BC

### OFFICIAL JUDGING SCHEDULE

#### **NWCC Specialty – Judge: Ms. Carmen Haller, Langley, BC**

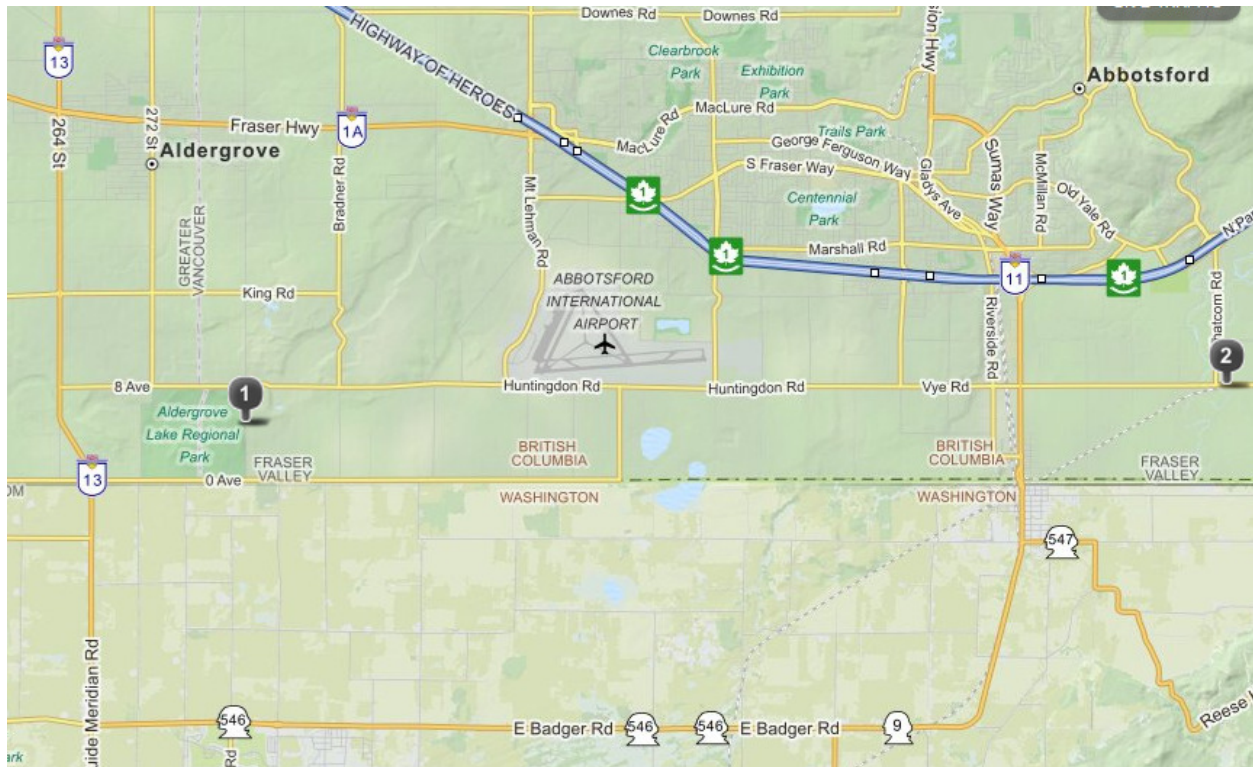
**9.00 a.m.** 42 Total (32 Regular Classes, 3 Altered, 7 Unofficial/Non-Regular)  
13 Males (1 Jr. Pup, 2 Sr. Pup, 1 Yearling, 3 Bred By, 6 Open)  
1 Jr Veteran Males, 3 Sr Veteran Male  
8 Females (2 Jr. Pup, 1 Sr Pup, 2 Yearling, 1 Can. Bred, 2 Open)  
5 Male Specials, 2 Female Specials  
2 Baby Puppies (1 Male, 1 Female)  
3 Altered Females  
1 Brace  
4 Racing Class

Please bring your own shade/shelter and water. All judging will be OUTDOORS with no cover in case of inclement weather.

*Emily Szabo, Show Secretary, [LMWA@shaw.ca](mailto:LMWA@shaw.ca) Schedule is based on 25 dogs per hour.*

**PLEASE NOTE: Saturday and Sunday's shows are at DIFFERENT locations!!**

A C.W.A. Whippet Racing event will take place on Sunday at the same site, following completion of the Specialty Show. For more information on the race meet, please contact Jennifer Szabo at [RacingForFun@shaw.ca](mailto:RacingForFun@shaw.ca)



### **DIRECTIONS TO SATURDAY SHOW SITE: (#1 on map) – 501 Lefeuve Road, Aldergrove**

**From Highway 1:** – take Exit #73 (Aldergrove/264th Street/Highway 13). Go south on Highway 13 (264<sup>th</sup> Street) for 9.5 kms, thru two traffic lights. Turn left onto 8th Ave. Go thru a 4 way stop, *go past main park entrance* and turn right at the next street onto Lefeuve Road (follow signs to “Aldergrove Bowl”). Go up the hill and turn right at the gravel entrance (yellow bar-gate) and proceed into parking lot.

**From the US** –take exit #256 in Bellingham and proceed north on Hwy. 539 (Guide Meridian Road) to the **Lynden/Aldergrove** border crossing (opens at 8 a.m.) and turn right at the second street onto 8<sup>th</sup> Avenue. Go thru 4 way stop, *go past main park entrance* and turn right at the next street onto Lefeuve Road (follow signs to “Aldergrove Bowl”). Go up the hill and turn right at the gravel entrance (yellow bar-gate) and proceed into parking lot. Show site is approximately 10 minutes from the border

### **DIRECTIONS TO SUNDAY SHOW SITE: (#2 on map) – 36321 Vye Road, Abbotsford**

**From Highway 1:** take Exit #95 in east Abbotsford (Whatcom Rd) and proceed south on Whatcom Road. School is at the corner of Vye Rd. and Whatcom Rd. on your left.

**From the US:** – take exit 256 in Bellingham and proceed north on Hwy. 539 (Guide Meridian Road) for 13 miles. Turn right at traffic signal onto Badger Road (Hwy. 546) and continue for approximately 12 miles. Follow signs and take the Sumas border crossing. Turn right at the traffic light onto Vye Road (Buckerfields and a gas station on your left). Turn left onto Whatcom Road and school is immediately on your right.